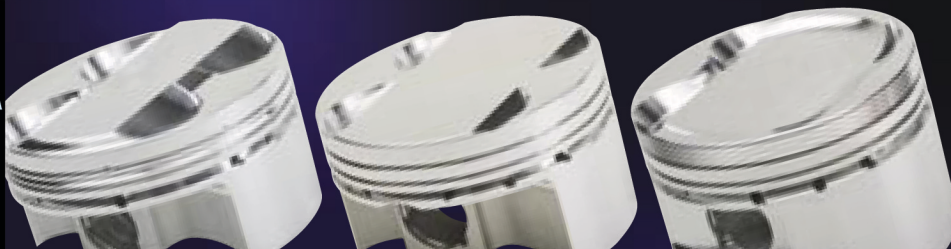




ACURA

1994-01 INTEGRA GSR

B18C1



BORE	OVERSIZE	STROKE	ROD	C/D	HEAD CC'S	C/R	DOVE CC'S	GRAM WEIGHT	FOOT NOTE	SKIRT STYLE	PART NUMBER	STANDARD RING SET	OPTIONAL RING SET
81.00	STD	3.433	5.433	1.181	41.5	8.8:1	-9.3	262	T	R	189681	JG1004-3189	JXC0F4-3189-3
81.00	STD	3.433	5.433	1.181	41.5	8.8:1	-9.3	Call	T	F	218900	JG1004-3189	JXC0F4-3189-3
81.50	+0.020	3.433	5.433	1.181	41.5	8.9:1	-9.3	267	T	R	189682	JG1004-3209	JXC0F4-3209-2
81.50	+0.020	3.433	5.433	1.181	41.5	8.9:1	-9.3	Call	T	F	218901	JG1004-3209	JXC0F4-3209-2
82.00	+0.040	3.433	5.433	1.176	41.5	9.0:1	-9.0	280	N,T	R	242878	JG1004-3228	JXC0F4-3228-2
83.00	+0.080	3.433	5.433	1.176	41.5	9.0:1	-10.2	285	N,T	R	242879	JG1004-3268	JXC0F4-3268-2
82.00	+0.040	3.433	5.433	1.176	41.5	9.8:1	-3.7	290	N,T	R	242876	JG1004-3228	JXC0F4-3228-2
83.00	+0.080	3.433	5.433	1.176	41.5	9.8:1	-4.9	295	N,T	R	242877	JG1004-3268	JXC0F4-3268-2
81.00	STD	3.433	5.433	1.181	41.5	10.1:1	-1.7	285	T	R	176449	JG1004-3189	JXC0F4-3189-3
81.00	STD	3.433	5.433	1.181	41.5	10.1:1	-1.7	Call	T	F	218902	JG1004-3189	JXC0F4-3189-3
81.50	+0.020	3.433	5.433	1.181	41.5	10.1:1	-1.7	290	T	R	176450	JG1004-3209	JXC0F4-3209-2
81.50	+0.020	3.433	5.433	1.181	41.5	10.1:1	-1.7	Call	T	F	218903	JG1004-3209	JXC0F4-3209-2
81.00	STD	3.433	5.433	1.181	41.5	11.5:1	5.6	277	U	R	242872	JG1004-3189	JXC0F4-3189-3
81.50	+0.020	3.433	5.433	1.181	41.5	11.5:1	5.2	282	U	R	242873	JG1004-3209	JXC0F4-3209-2
82.00	+0.040	3.433	5.433	1.176	41.5	11.5:1	4.7	274	N,U	R	242874	JG1004-3228	JXC0F4-3228-2
83.00	+0.080	3.433	5.433	1.176	41.5	11.5:1	3.8	NEW!	N,U	R	242875	JG1004-3268	JXC0F4-3268-2
81.00	STD	3.433	5.433	1.195	41.5	12.3:1	6.7	275	U	R	242149	JG1004-3189	JXC0F4-3189-3
81.00	STD	3.433	5.433	1.195	41.5	12.3:1	6.7	Call	U	F	218904	JG1004-3189	JXC0F4-3189-3
81.50	+0.020	3.433	5.433	1.195	41.5	12.4:1	6.7	287	U	R	242150	JG1004-3209	JXC0F4-3209-2
81.50	+0.020	3.433	5.433	1.195	41.5	12.4:1	6.7	Call	U	F	218905	JG1004-3209	JXC0F4-3209-2

ACURA

1997-00 INTEGRA TYPE R

B18C5



81.50	+0.020	3.433	5.433	1.195	42.7	8.8:1	-9.8	267	T	R	188982	JG1004-3209	JXC0F4-3209-2
81.50	+0.020	3.433	5.433	1.195	42.7	8.9:1	-9.8	Call	T	F	218906	JG1004-3209	JXC0F4-3209-2
81.50	+0.020	3.433	5.433	1.190	42.7	11.1:1	3.4	282	U	R	209846	JG1004-3209	JXC0F4-3209-2
81.50	+0.020	3.433	5.433	1.190	42.7	11.2:1	3.4	Call	U	F	218907	JG1004-3209	JXC0F4-3209-2

ACURA

2002-UP RSX TYPE S & 2006 CIVIC Si

K20A2/A3



Compression Ratio will be .7 higher with a K20A3 head. K20A3 head cc is 48

86.00	STD	3.386	5.472	1.176	50.7	9.0:1	-4.6	309	T	R	204255	JC0004-3386	-
86.00	STD	3.386	5.472	1.176	50.7	10.6:1	5.8	307	V	R	204256	JC0004-3386	-
86.00	STD	3.386	5.472	1.176	50.7	11.2:1	9.0	314	U	R	226379	JC0004-3386	-

Footnotes: N - Must sleeve block, T - Accepts Turbo and Nitrous, U - Not Designed for use with Turbo or Nitrous, V - Accepts Nitrous • Skirt Style: F - FSR (Forged Side Relief), R - Full Round Skirt



ACURA K24A2 WITH A K20A2 HEAD



*Fits 1mm oversized intake and exhaust valves

Compression Ratio will be .3 higher with a K20A3 head. K20A3 head cc is 48

BORE	OVERSIZE	STROKE	ROD	C/D	HEAD CC'S	C/R	DOME CC'S	GRAM WEIGHT	FOOT NOTE	SKIRT STYLE	PART NUMBER	STANDARD RING SET	OPTIONAL RING SET
87.00	STD	3.898	5.984	1.176	50.7	8.5:1	-22.9	NEW!	T	R	242866	JG1004-3425	JXCOF4-3425-2
88.00	+040	3.898	5.984	1.176	50.7	8.5:1	-24.6	NEW!	N,T	R	242867	JG1004-3464	
89.00	+080	3.898	5.984	1.176	50.7	8.5:1	-26.3	NEW!	N,T	R	242869	JG1004-3504	JXCOF4-3504-0
87.00	STD	3.898	5.984	1.176	50.7	10.5:1	-6.3	309	V	R	242858*	JG1004-3425	JXCOF4-3425-2
88.00	+040	3.898	5.984	1.176	50.7	10.5:1	-7.6	319	V	R	242862*	JG1004-3464	
89.00	+080	3.898	5.984	1.176	50.7	10.5:1	-9.0	329	N,V	R	242865*	JG1004-3504	JXCOF4-3504-0
87.00	STD	3.898	5.984	1.176	50.7	13.5:1	8.5	332	U	R	242194*	JG1004-3425	JXCOF4-3425-2
88.00	+040	3.898	5.984	1.176	50.7	13.5:1	7.6	341	U	R	242196*	JG1004-3464	
89.00	+080	3.898	5.984	1.176	50.7	13.5:1	6.6	345	N,U	R	242198*	JG1004-3504	JXCOF4-3504-0

HONDA 1993-97 VTEC DEL SOL & 1999-00 CIVIC Si B16A1/A2/A3



81.00	STD	3.047	5.290	1.181	42.7	8.1:1	-9.3	262	T	R	189681	JG1004-3189	JXCOF4-3189-3
81.50	+020	3.047	5.290	1.181	42.7	8.2:1	-9.3	267	T	R	189682	JG1004-3209	JXCOF4-3209-2
82.00	+040	3.433	5.433	1.176	41.5	9.0:1	-9.0	NEW!	N,T	R	242878	JG1004-3228	JXCOF4-3228-2
83.00	+080	3.433	5.433	1.176	41.5	9.0:1	-10.2	NEW!	N,T	R	242879	JG1004-3268	JXCOF4-3268-2
84.00	+120	3.047	5.290	1.181	42.7	8.2:1	-11.9	286	N,T	R	185917	JG1004-3307	JXCOF4-3307-2
84.50	+140	3.047	5.290	1.181	42.7	8.3:1	-11.9	292	N,T	R	199888	JG1004-3327	JXCOF4-3327-0
85.00	+160	3.047	5.290	1.181	42.7	8.4:1	-11.9	296	N,T	R	185918	JG1004-3346	JXCOF4-3346-2
81.00	STD	3.047	5.290	1.181	42.7	9.2:1	-1.7	285	T	R	176449	JG1004-3189	JXCOF4-3189-3
81.50	+020	3.047	5.290	1.181	42.7	9.3:1	-1.7	290	T	R	176450	JG1004-3209	JXCOF4-3209-2
82.00	+040	3.433	5.433	1.176	41.5	9.8:1	-3.7	NEW!	N,T	R	242876	JG1004-3228	JXCOF4-3228-2
83.00	+080	3.433	5.433	1.176	41.5	9.8:1	-4.9	NEW!	N,T	R	242877	JG1004-3268	JXCOF4-3268-2
84.00	+120	3.047	5.290	1.181	42.7	9.8:1	-1.7	295	N,V	R	185919	JG1004-3307	JXCOF4-3307-2
85.00	+160	3.047	5.290	1.181	42.7	9.9:1	-1.7	305	N,V	R	185920	JG1004-3346	JXCOF4-3346-2
84.00	+120	3.047	5.290	1.181	42.7	10.7:1	3.2	296	N,U	R	209847	JG1004-3307	JXCOF4-3307-2
84.50	+140	3.047	5.290	1.181	42.7	10.8:1	3.2	300	N,U	R	209848	JG1004-3327	JC1004-3327-0
81.00	STD	3.047	5.290	1.181	42.7	11.5:1	6.7	275	U	F	224229	JG1004-3189	JXCOF4-3189-3
82.00	+040	3.433	5.433	1.176	41.5	11.5:1	4.7	NEW!	N,U	R	242874	JG1004-3228	JXCOF4-3228-2
83.00	+080	3.433	5.433	1.176	41.5	11.5:1	3.8	NEW!	N,U	R	242875	JG1004-3268	JXCOF4-3268-2
81.50	+020	3.047	5.290	1.181	42.7	11.6:1	6.7	287	U	F	224230	JG1004-3209	JXCOF4-3209-2
84.00	+120	3.047	5.290	1.181	42.7	12.2:1	6.7	283	N,U	F	224231	JG1004-3307	JXCOF4-3307-2
84.50	+140	3.047	5.290	1.181	42.7	12.3:1	6.7	318	N,U	F	224232	JG1004-3346	JXCOF4-3346-2
85.00	+160	3.047	5.290	1.181	42.7	12.4:1	6.7	318	N,U	F	224233	JG1004-3346	JXCOF4-3346-2



SUN VIGOR

www.sunvigor.com.hk

HONDA B20 VTEC

WITH A B16A HEAD *Compression ratio will be .2 lower with B18C1 crank*



BORE	OVERSIZE	STROKE	ROD	C/D	HEAD CC'S	C/R	DOME CC'S	GRAM WEIGHT	FOOT NOTE	SKIRT STYLE	PART NUMBER	STANDARD RING SET	OPTIONAL RING SET
84.00	STD	3.504	5.394	1.181	42.7	9.0:1	-11.9	286	T	R	185917	JG1004-3307	JXC0F4-3307-2
84.00	STD	3.504	5.394	1.181	42.7	9.0:1	-11.9	Call	T	F	218908	JG1004-3307	JXC0F4-3307-2
84.50	+.020	3.504	5.394	1.181	42.7	9.0:1	-11.9	292	T	R	199888	JG1004-3327	JXC0F4-3327-0
84.50	+.020	3.504	5.394	1.181	42.7	9.0:1	-11.9	Call	T	F	218909	JG1004-3327	JXC0F4-3327-0
85.00	+.040	3.504	5.394	1.181	42.7	9.1:1	-11.9	296	T	R	185918	JG1004-3346	JXC0F4-3346-2
85.00	+.040	3.504	5.394	1.181	42.7	9.1:1	-11.9	Call	T	F	218910	JG1004-3346	JXC0F4-3346-2
84.00	STD	3.504	5.394	1.181	42.7	10.5:1	-1.7	295	V	R	185919	JG1004-3307	JXC0F4-3307-2
84.00	STD	3.504	5.394	1.181	42.7	10.5:1	-1.7	Call	V	F	218911	JG1004-3307	JXC0F4-3307-2
85.00	+.040	3.504	5.394	1.181	42.7	10.5:1	-1.7	305	V	R	185920	JG1004-3346	JXC0F4-3346-2
85.00	+.040	3.504	5.394	1.181	42.7	10.5:1	-1.7	Call	V	F	218912	JG1004-3346	JXC0F4-3346-2
84.00	STD	3.504	5.394	1.181	42.7	11.5:1	3.2	296	U	R	209847	JG1004-3307	JXC0F4-3307-2
84.00	STD	3.504	5.394	1.181	42.7	11.5:1	3.2	Call	U	F	218913	JG1004-3307	JXC0F4-3307-2
84.50	+.020	3.504	5.394	1.181	42.7	11.6:1	3.2	300	U	R	209848	JG1004-3327	JXC0F4-3327-0
84.50	+.020	3.504	5.394	1.181	42.7	11.6:1	3.2	Call	U	F	218914	JG1004-3327	JXC0F4-3327-0
84.00	STD	3.504	5.394	1.195	42.7	12.5:1	4.8	283	U	R	185921	JG1004-3307	JXC0F4-3307-2
84.00	STD	3.504	5.394	1.181	42.7	12.5:1	4.8	Call	U	F	218915	JG1004-3307	JXC0F4-3307-2
85.00	+.040	3.504	5.394	1.195	42.7	12.6:1	4.8	318	U	R	185922	JG1004-3346	JXC0F4-3346-2
85.00	+.040	3.504	5.394	1.181	42.7	12.6:1	4.8	Call	U	F	218916	JG1004-3346	JXC0F4-3346-2

HONDA 1992-96 PRELUDE Si & 1997-01 PRELUDE H22A1



87.00	STD	3.571	5.630	1.220	53.8	9.0:1	-7.1	325	M,T	R	208475	JC1204-3425	-
87.00	STD	3.571	5.630	1.220	53.8	10.0:1	1.3	323	M,V	R	166036	JC1204-3425	-
87.00	STD	3.571	5.630	1.220	53.8	11.5:1	9.8	348	M,U	R	166035	JC1204-3425	-

HONDA 1992-96 PRELUDE Si & 1997-01 PRELUDE H23A1



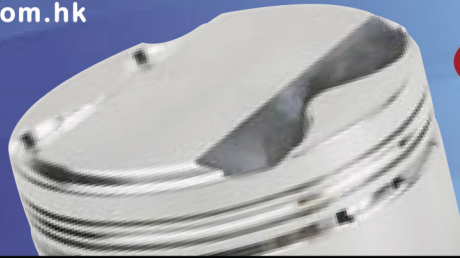
87.50	+.020	3.740	5.571	1.204	50.0	9.0:1	-11.9	328	M,T	R	208472	JC0004-3445	-
87.50	+.020	3.740	5.571	1.204	50.0	10.0:1	-5.1	316	M,V	R	208474	JC0004-3445	-

Footnotes: M - FRM Block must be resleeved, T - Accepts Turbo and Nitrous, U- Not Designed for use with Turbo or Nitrous, V - Accepts Nitrous • Skirt Style: F- FSR (Forged Side Relief), R - Full Round Skirt



DODGE

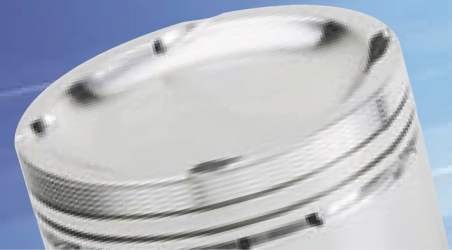
1994-01 NEON
ECB/ECC/420A



BORE	OVERSIZE	STROKE	ROD	C/D	HEAD CC'S	C/R	DOVE CC'S	GRAM WEIGHT	FOOT NOTE	SKIRT STYLE	PART NUMBER	STANDARD RING SET	OPTIONAL RING SET
88.00	+.020	3.268	5.470	1.236	52.0	8.8:1	-2.6	361	T	R	208476	JC1204-3465	-
88.00	+.020	3.268	5.470	1.236	52.0	10.5:1	7.6	345	V	R	242870	JG1004-3464	-
88.50	+.040	3.268	5.470	1.236	52.0	10.5:1	7.1	348	V	R	242871	JG1004-3484	-

DODGE

2003-UP NEON SRT-4
A853/SRT4



87.50	STD	3.976	5.945	1.432	52.0	8.5:1	-20.8	361	T	R	240192	JG1004-3445	JXCOF4-3445-0
88.00	+.020	3.976	5.945	1.432	52.0	8.5:1	-21.7	364	T	R	240193	JG1004-3465	-

FORD

2000-UP ZX3
ZETEC



85.00	+.007	3.465	5.48	1.171	48.0	9.0:1	-7.2	295	T	R	185915	JG1004-3346	JXCOF4-3346-2
85.00	+.007	3.465	5.48	1.171	48.0	10.5:1	3.5	321	V	R	185916	JG1004-3346	JXCOF4-3346-2

MITSUBISHI

1988-92 ECLIPSE/TALON, EVO 1-3
4G63



21mm/.827" Pin Diameter, * Stroker kit for a 4G64 crank

85.50	+.020	3.465	5.906	1.367	47.0	8.5:1	-13.4	317	T	R	208478	JG9004-3366	-
85.50	+.020	3.937	5.906	1.130	47.0	8.5:1	-22.2	281	T	R	202194*	J670F4-3366	-
86.00	+.040	3.937	5.906	1.130	47.0	8.5:1	-22.2	287	T	R	202195*	J64004-3386	-

MITSUBISHI

1993-UP ECLIPSE/TALON, EVO 4-8
4G63



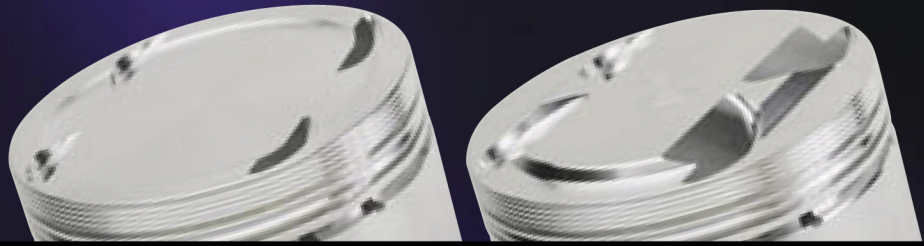
22mm/.866" Pin Diameter, * Stroker kit for a 4G64 crank

85.50	+.020	3.465	5.906	1.367	47.0	8.5:1	-13.4	316	T	R	208477	JG9004-3366	-
85.50	+.020	3.937	5.906	1.130	47.0	8.5:1	-22.2	283	T	R	202192*	J670F4-3366	-
86.00	+.040	3.937	5.906	1.130	47.0	8.5:1	-22.2	286	T	R	202193*	J64004-3386	-



NISSAN

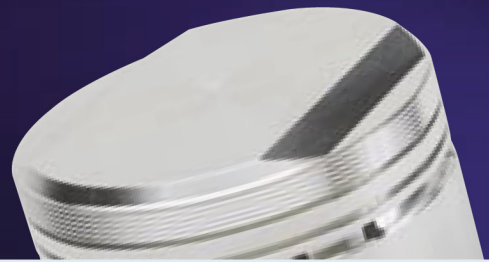
1990-96 300ZX
VG30DE(TT)



BORE	OVERSIZE	STROKE	ROD	C/D	HEAD CC'S	C/R	DOVE CC'S	GRAM WEIGHT	FOOT NOTE	SKIRT STYLE	PART NUMBER	STANDARD RING SET	OPTIONAL RING SET
87.50	+.020	3.270	6.071	1.255	49.5	9.0:1	-4.1	340	T	R	165053	JC5006-3445	-
87.50	+.020	3.270	6.071	1.255	49.5	10.5:1	4.8	323	V	R	166027	JC5006-3445	-

NISSAN

R32-R34 SKYLINE
RB26DETT



86.50	+.020	3.386	4.780	1.185	70.0	8.5:1	14.6	355	T	R	209849	JC9006-3406	-
87.00	+.040	3.386	4.780	1.185	70.0	8.5:1	14.6	360	T	R	209855	JC9006-3425	-

NISSAN

1991-98 240SX
KA24DE



89.50	+.020	3.780	6.496	1.336	46.0	9.0:1	-22.0	NEW!	T	R	244514	JG1004-3524	-
-------	-------	-------	-------	-------	------	-------	-------	-------------	---	---	---------------	-------------	---

NISSAN

SENTRA/200SX SE-R, SILVIA, 180SX & BLUEBIRD
SR20DE(T)



86.00	STD	3.386	5.366	1.253	46.5	8.5:1	-11.9	335	T	R	244871	JG9004-3386	-
86.50	+.020	3.386	5.366	1.253	46.5	8.5:1	-12.5	338	T	R	245015	JC9004-3406	-
87.00	+.040	3.386	5.366	1.253	46.5	8.5:1	-13.3	341	T	R	245016	JC2104-3425	-

NISSAN

2003-UP 350Z & G35
VQ35DE



95.50	STD	3.205	5.675	1.165	56.0	8.5:1	-12.6	381	T	R	231532	JC2806-3760	-
95.50	STD	3.205	5.675	1.165	56.0	10.5:1	3.7	365	V	R	231580	JC2806-3760	-



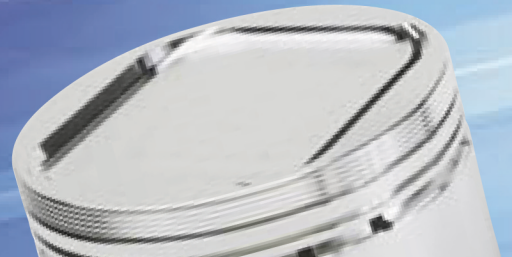
SUBARU
1997-2004 IMPREZA
EJ25D

*STi Model



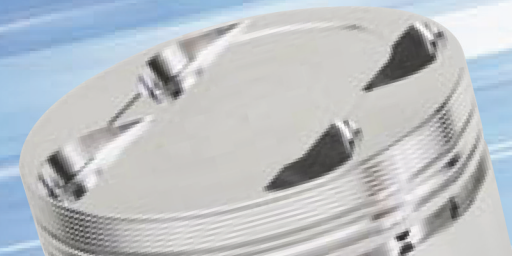
BORE	OVERSIZE	STROKE	ROD	C/D	HEAD CC'S	C/R	DOVE CC'S	GRAM WEIGHT	FOOT NOTE	SKIRT STYLE	PART NUMBER	STANDARD RING SET	OPTIONAL RING SET
99.50	STD	3.110	5.137	1.192	48.0	8.5:1	-29.5	386	T	R	205091	JC3004-3917	-
99.50	STD	3.110	5.165	1.162	51.0	8.5:1	-24.5	387	T	R	205103	JC3004-3917	-
99.50	STD	3.110	5.137	1.209	Call	8.5:1	-21.25	394	T	R	244664*	JC3104-3917	-

SUBARU
2001-UP WRX
EJ20



92.00	STD	2.953	5.135	1.287	48.0	8.0:1	-12.0	364	T	R	205090	JC9004-3622	-
92.50	+020	2.953	5.135	1.287	48.0	8.0:1	-12.0	367	T	R	226378	JC91204-3642	-

TOYOTA
1991-95 MR2 TURBO
3SGTE



86.50	+020	3.385	5.433	1.378	50.0	9.0:1	-4.7	341	T	R	162109	JC4004-3405	-
-------	------	-------	-------	-------	------	-------	------	-----	---	---	---------------	-------------	---

TOYOTA
1993-98 SUPRA TURBO
2JZGTE



86.50	+020	3.386	5.59	1.338	40.0	8.5:1	-14.0	339	T	R	210384	JC9006-3406	-
-------	------	-------	------	-------	------	-------	-------	-----	---	---	---------------	-------------	---

TOYOTA
1987-92 SUPRA TURBO
7MGTE



83.50	+020	3.582	5.984	1.299	40.0	8.4:1	-18.5	293	T	R	186241	JG1006-3287	JXC0F6-3287-2
84.00	+040	3.582	5.984	1.299	40.0	8.4:1	-18.5	298	T	R	186242	JG1006-3307	JXC0F6-3307-2

Footnotes: T - Accepts Turbo and Nitrous, U - Not Designed for use with Turbo or Nitrous, V - Accepts Nitrous • Skirt Style: F - FSR (Forged Side Relief), R - Full Round Skirt



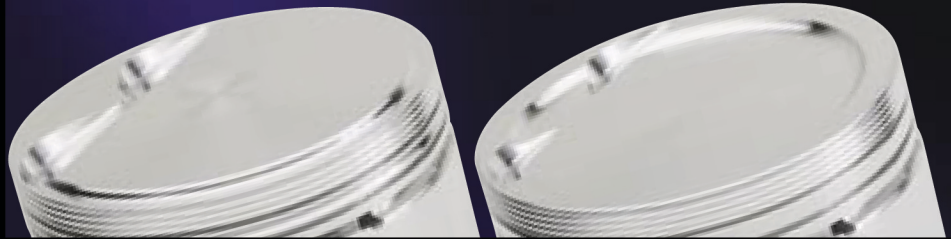
SUN VIGOR

www.sunvigor.com.hk

VOLKSWAGEN

1990-93 2.0L 16V JETTA/GTI/PASSAT

9A



BORE	OVERSIZE	STROKE	ROD	C/D	HEAD CC'S	C/R	DOVE CC'S	GRAM WEIGHT	FOOT NOTE	SKIRT STYLE	PART NUMBER	STANDARD RING SET	OPTIONAL RING SET
83.00	+0.020	3.654	5.669	1.174	46.0	9.0:1	-7.8	286	T	R	186231	JG1004-3268	JXC0F4-3268-2
83.50	+0.040	3.654	5.669	1.174	46.0	9.0:1	-7.8	290	T	R	186232	JG1004-3287	JXC0F4-3287-2
83.00	+0.020	3.654	5.669	1.174	46.0	10.8:1	3.7	287	V	R	186233	JG1004-3268	JXC0F4-3268-2
83.50	+0.040	3.654	5.669	1.174	46.0	10.8:1	3.7	294	V	R	186234	JG1004-3287	JXC0F4-3287-2

VOLKSWAGEN

1993-99 2.0L 8V GOLF III/JETTA III

ABA

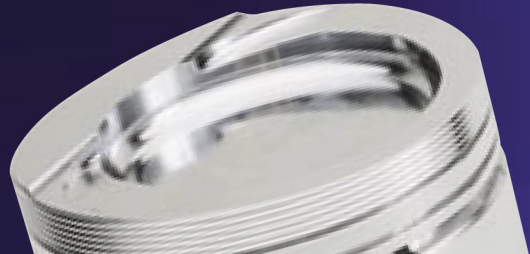


82.50	STD	3.654	6.26	1.213	30.0	9.6:1	-19.3	252	V	R	186239	JG1004-3250	JXC0F4-3248-2
83.00	+0.020	3.654	6.26	1.213	30.0	9.6:1	-19.3	258	V	R	186240	JG1004-3268	JXC0F4-3268-2

VOLKSWAGEN

1992-99 VR6 GTI/JETTA GLX/PASSAT

AAA



82.00	+0.040	3.552	6.457	1.275	-	9.0:1	-11.5	304	T	R	186235	JG1006-3228	JXC0F6-3228-2
83.00	+0.080	3.552	6.457	1.275	-	9.0:1	-11.5	311	T	R	186236	JG1006-3268	JXC0F6-3268-2
82.00	+0.040	3.552	6.457	1.275	-	10.0:1	-5.0	296	V	R	186237	JG1006-3228	JXC0F6-3228-2
83.00	+0.080	3.552	6.457	1.275	-	10.0:1	-5.0	305	V	R	186238	JG1006-3268	JXC0F6-3268-2

VW/AUDI

A4, GOLF, JETTA, TT

1.8T



81.00	STD	3.402	5.669	1.286	43	8.5:1	-8.0	300	T	R	242909	JG1004-3189	JXC0F4-3189-3
81.50	+0.020	3.402	5.669	1.286	43	8.5:1	-8.6	305	T	R	242926	JG1004-3209	JXC0F4-3209-2
82.00	+0.040	3.402	5.669	1.286	43	8.5:1	-9.3	310	T	R	242928	JG1004-3228	JXC0F4-3228-2
81.00	STD	3.402	5.669	1.286	43	9.25:1	-2.8	NEW!	T	R	242880	JG1004-3189	JXC0F4-3189-3
81.50	+0.020	3.402	5.669	1.286	43	9.25:1	-3.2	NEW!	T	R	242881	JG1004-3209	JXC0F4-3209-2
82.00	+0.040	3.402	5.669	1.286	43	9.25:1	-3.7	NEW!	T	R	242882	JG1004-3228	JXC0F4-3228-2

Footnotes: T - Accepts Turbo and Nitrous, U - Not Designed for use with Turbo or Nitrous, V - Accepts Nitrous • Skirt Style: F - FSR (Forged Side Relief), R - Full Round Skirt

ACURA
1997-00 INTEGRA TYPE R
B18C5

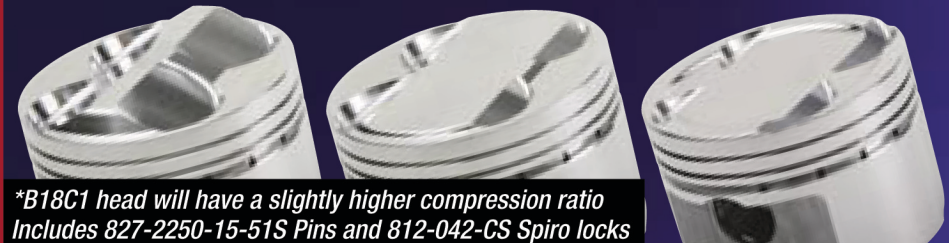


Includes 827-2250-15-51S Pins and 812-042-CS Spiro locks

BORE	OVERSIZE	STROKE	ROD	C/D	HEAD CC'S	C/R	DOME CC'S	GRAM WEIGHT	FOOT NOTE	SKIRT STYLE	PART NUMBER	STANDARD RING SET	OPTIONAL RING SET
81.00	STD	3.433	5.429	1.181	42.7	8.8:1	-8.4	276	T	R	149235	JXC0F4-3189-3	JG1004-3189
81.25	+0.10	3.433	5.429	1.181	42.7	8.8:1	-8.4	279	T	R	149236	JXC0F4-3199-0	JG1004-3199
81.50	+0.20	3.433	5.429	1.181	42.7	8.8:1	-8.4	283	T	R	149237	JXC0F4-3209-2	JG1004-3209
81.00	STD	3.433	5.429	1.181	42.7	9.0:1	-6.6	271	T	R	149229	JXC0F4-3189-3	JG1004-3189
81.25	+0.10	3.433	5.429	1.181	42.7	9.0:1	-6.6	276	T	R	149230	JXC0F4-3199-0	JG1004-3199
81.50	+0.20	3.433	5.429	1.181	42.7	9.0:1	-6.6	279	T	R	149231	JXC0F4-3209-2	JG1004-3209
81.00	STD	3.433	5.429	1.181	42.7	9.7:1	-2.2	270	V	R	149214	JXC0F4-3189-3	JG1004-3189
81.25	+0.10	3.433	5.429	1.181	42.7	9.7:1	-2.2	272	V	R	149215	JXC0F4-3199-0	JG1004-3199
81.50	+0.20	3.433	5.429	1.181	42.7	9.7:1	-2.2	273	V	R	149216	JXC0F4-3209-2	JG1004-3209
81.00	STD	3.433	5.429	1.181	42.7	10.2:1	0.5	271	V	R	149232	JXC0F4-3189-3	JG1004-3189
81.25	+0.10	3.433	5.429	1.181	42.7	10.2:1	0.5	275	V	R	149233	JXC0F4-3199-0	JG1004-3199
81.50	+0.20	3.433	5.429	1.181	42.7	10.2:1	0.5	281	V	R	149234	JXC0F4-3209-2	JG1004-3209
81.00	STD	3.433	5.429	1.181	42.7	10.5:1	1.7	279	V,L	R	149226	JXC0F4-3189-3	JG1004-3189
81.25	+0.10	3.433	5.429	1.181	42.7	10.5:1	1.7	281	U,L	R	149227	JXC0F4-3199-0	JG1004-3199
81.50	+0.20	3.433	5.429	1.181	42.7	10.5:1	1.7	285	V	R	149228	JXC0F4-3209-2	JG1004-3209
81.00	STD	3.433	5.429	1.181	42.7	11.3:1	5.7	290	U	R	149211	JXC0F4-3189-3	JG1004-3189
81.25	+0.10	3.433	5.429	1.181	42.7	11.3:1	5.7	294	U	R	149212	JXC0F4-3199-0	JG1004-3199
81.50	+0.20	3.433	5.429	1.181	42.7	11.3:1	5.7	296	U	R	149213	JXC0F4-3209-2	JG1004-3209

ACURA
B18A1/B1

WITH LS VTEC B16A OR B18C1 HEAD



*B18C1 head will have a slightly higher compression ratio
Includes 827-2250-15-51S Pins and 812-042-CS Spiro locks

81.00	STD	3.504	5.394	1.181	42.7	8.9:1	-8.4	276	T	R	149235	JXC0F4-3189-3	JG1004-3189
81.25	+0.10	3.504	5.394	1.181	42.7	8.9:1	-8.4	279	T	R	149236	JXC0F4-3199-0	JG1004-3199
81.50	+0.20	3.504	5.394	1.181	42.7	8.9:1	-8.4	283	T	R	149237	JXC0F4-3209-2	JG1004-3209
81.00	STD	3.504	5.394	1.181	42.7	9.6:1	-6.6	271	V	R	149229	JXC0F4-3189-3	JG1004-3189
81.25	+0.10	3.504	5.394	1.181	42.7	9.6:1	-6.6	276	V	R	149230	JXC0F4-3199-0	JG1004-3199
81.50	+0.20	3.504	5.394	1.181	42.7	9.6:1	-6.6	279	V	R	149231	JXC0F4-3209-2	JG1004-3209
81.00	STD	3.504	5.394	1.181	42.7	10.0:1	-2.2	270	V	R	149214	JXC0F4-3189-3	JG1004-3189
81.25	+0.10	3.504	5.394	1.181	42.7	10.0:1	-2.2	272	V	R	149215	JXC0F4-3199-0	JG1004-3199
81.50	+0.20	3.504	5.394	1.181	42.7	10.0:1	-2.2	273	V	R	149216	JXC0F4-3209-2	JG1004-3209
81.00	STD	3.504	5.394	1.181	42.7	10.4:1	0.5	271	V	R	149232	JXC0F4-3189-3	JG1004-3189
81.25	+0.10	3.504	5.394	1.181	42.7	10.4:1	0.5	275	V	R	149233	JXC0F4-3199-0	JG1004-3199
81.50	+0.20	3.504	5.394	1.181	42.7	10.4:1	0.5	281	V	R	149234	JXC0F4-3209-2	JG1004-3209
81.00	STD	3.504	5.394	1.181	42.7	11.2:1	1.7	279	U,L	R	149226	JXC0F4-3189-3	JG1004-3189
81.25	+0.10	3.504	5.394	1.181	42.7	11.2:1	1.7	281	U,L	R	149227	JXC0F4-3199-0	JG1004-3199
81.50	+0.20	3.504	5.394	1.181	42.7	11.2:1	1.7	285	U	R	149228	JXC0F4-3209-2	JG1004-3209
81.00	STD	3.504	5.394	1.181	42.7	11.5:1	5.7	290	U	R	149211	JXC0F4-3189-3	JG1004-3189
81.25	+0.10	3.504	5.394	1.181	42.7	11.5:1	5.7	294	U	R	149212	JXC0F4-3199-0	JG1004-3199
81.50	+0.20	3.504	5.394	1.181	42.7	11.5:1	5.7	296	U	R	149213	JXC0F4-3209-2	JG1004-3209

Footnotes: L - Limited Availability, T - Accepts Turbo and Nitrous, U - Not Designed for use with Turbo or Nitrous, V - Accepts Nitrous • Skirt Style: F- FSR (Forged Side Relief), R - Full Round Skirt

HONDA

1993-97 VTEC DEL SOL, 1999-00 CIVIC SI

B16A1/A2/A3



Includes 827-2250-15-51S Pins and 812-042-CS Spiro locks

BORE	OVERSIZE	STROKE	ROD	C/D	HEAD CC'S	C/R	DOVE CC'S	GRAM WEIGHT	FOOT NOTE	SKIRT STYLE	PART NUMBER	STANDARD RING SET	OPTIONAL RING SET
81.00	STD	3.433	5.429	1.181	42.7	8.8:1	-8.4	276	T	R	149235	JXC0F4-3189-3	JG1004-3189
81.25	+010	3.433	5.429	1.181	42.7	8.8:1	-8.4	279	T	R	149236	JXC0F4-3199-0	JG1004-3199
81.50	+020	3.433	5.429	1.181	42.7	8.8:1	-8.4	283	T	R	149237	JXC0F4-3209-2	JG1004-3209
81.00	STD	3.433	5.429	1.181	42.7	9.0:1	-6.6	271	T	R	149229	JXC0F4-3189-3	JG1004-3189
81.25	+010	3.433	5.429	1.181	42.7	9.0:1	-6.6	276	T	R	149230	JXC0F4-3199-0	JG1004-3199
81.50	+020	3.433	5.429	1.181	42.7	9.0:1	-6.6	279	T	R	149231	JXC0F4-3209-2	JG1004-3209
81.00	STD	3.433	5.429	1.181	42.7	9.7:1	-2.2	270	V	R	149214	JXC0F4-3189-3	JG1004-3189
81.25	+010	3.433	5.429	1.181	42.7	9.7:1	-2.2	272	V	R	149215	JXC0F4-3199-0	JG1004-3199
81.50	+020	3.433	5.429	1.181	42.7	9.7:1	-2.2	273	V	R	149216	JXC0F4-3209-2	JG1004-3209
81.00	STD	3.433	5.429	1.181	42.7	10.2:1	0.5	271	V	R	149232	JXC0F4-3189-3	JG1004-3189
81.25	+010	3.433	5.429	1.181	42.7	10.2:1	0.5	275	V	R	149233	JXC0F4-3199-0	JG1004-3199
81.50	+020	3.433	5.429	1.181	42.7	10.2:1	0.5	281	V	R	149234	JXC0F4-3209-2	JG1004-3209
81.00	STD	3.433	5.429	1.181	42.7	10.5:1	1.7	279	V,L	R	149226	JXC0F4-3189-3	JG1004-3189
81.25	+010	3.433	5.429	1.181	42.7	10.5:1	1.7	281	U,L	R	149227	JXC0F4-3199-0	JG1004-3199
81.50	+020	3.433	5.429	1.181	42.7	10.5:1	1.7	285	V	R	149228	JXC0F4-3209-2	JG1004-3209
81.00	STD	3.433	5.429	1.181	42.7	11.3:1	5.7	290	U	R	149211	JXC0F4-3189-3	JG1004-3189
81.25	+010	3.433	5.429	1.181	42.7	11.3:1	5.7	294	U	R	149212	JXC0F4-3199-0	JG1004-3199
81.50	+020	3.433	5.429	1.181	42.7	11.3:1	5.7	296	U	R	149213	JXC0F4-3209-2	JG1004-3209

HONDA

1988-95 CIVIC DX/LX, HB DX/CRX-DX

D15B2/B7



Includes 748-2250-12-51S Pins and 748-042-CS Spiro Locks

75.00	STD	3.327	5.276	1.213	38.0	9.0:1	-3.7	234	T	R	149184	JXC0F4-2953-2	JG1004-2953
75.25	+010	3.327	5.276	1.213	38.0	9.0:1	-3.7	236	T,L	R	149185	JXC0F4-2963-0	JG1004-2963
75.50	+020	3.327	5.276	1.213	38.0	9.0:1	-3.7	238	T	R	149186	JXC0F4-2972-2	JG1004-2972
75.00	STD	3.327	5.276	1.213	38.0	10.5:1	3.7	241	V,L	R	149187	JXC0F4-2953-2	JG1004-2953
75.25	+010	3.327	5.276	1.213	38.0	10.5:1	3.7	245	V,L	R	149188	JXC0F4-2963-0	JG1004-2963
75.50	+020	3.327	5.276	1.213	38.0	10.5:1	3.7	247	V	R	149189	JXC0F4-2972-2	JG1004-2972

HONDA

1992-95 CIVIC EX/SI, 1993-95 DEL SOL

D16Z6



Includes 748-2250-12-51S Pins and 748-042-CS Spiro Locks

75.00	STD	3.543	5.394	1.181	34.6	9.0:1	-11.0	230	T	JC4251	149199	JXC0F4-2953-2	JG1004-2953
75.25	+010	3.543	5.394	1.181	34.6	9.0:1	-11.0	233	T	JC4251	149200	JXC0F4-2963-0	JG1004-2963
75.50	+020	3.543	5.394	1.181	34.6	9.0:1	-11.0	236	T	JC4251	149201	JXC0F4-2972-2	JG1004-2972
75.00	STD	3.543	5.394	1.181	34.6	10.5:1	-3.2	227	V	JC4251	149202	JXC0F4-2953-2	JG1004-2953
75.25	+010	3.543	5.394	1.181	34.6	10.5:1	-3.2	228	V	JC4251	149203	JXC0F4-2963-0	JG1004-2963
75.50	+020	3.543	5.394	1.181	34.6	10.5:1	-3.2	233	V	JC4251	149204	JXC0F4-2972-2	JG1004-2972

HONDA
1988-91 CIVIC SI, CRX-SI
D16A6



Includes 748-2250-12-51S Pins and 748-042-CS Spiro Locks

BORE	OVERSIZE	STROKE	ROD	C/D	HEAD CC'S	C/R	DOVE CC'S	GRAM WEIGHT	FOOT NOTE	SKIRT STYLE	PART NUMBER	STANDARD RING SET	OPTIONAL RING SET
75.00	STD	3.543	5.394	1.161	38.0	8.5:1	-6.8	235	T	R	149193	JXC0F4-2953-2	JG1004-2953
75.25	+0.10	3.543	5.394	1.161	38.0	8.5:1	-6.8	233	T	R	149194	JXC0F4-2963-0	JG1004-2963
75.50	+0.20	3.543	5.394	1.161	38.0	8.5:1	-6.8	236	T	R	149195	JXC0F4-2972-2	JG1004-2972
75.00	STD	3.543	5.394	1.161	38.0	9.5:1	-2.9	233	V	R	149190	JXC0F4-2953-2	JG1004-2953
75.25	+0.10	3.543	5.394	1.161	38.0	9.5:1	-2.9	236	V	R	149191	JXC0F4-2963-0	JG1004-2963
75.50	+0.20	3.543	5.394	1.161	38.0	9.5:1	-2.9	239	V	R	149192	JXC0F4-2972-2	JG1004-2972
75.00	STD	3.543	5.394	1.161	38.0	11.0:1	4.3	240	U,L	R	149196	JXC0F4-2953-2	JG1004-2953
75.25	+0.10	3.543	5.394	1.161	38.0	11.0:1	4.3	242	U,L	R	149197	JXC0F4-2963-0	JG1004-2963
75.50	+0.20	3.543	5.394	1.161	38.0	11.0:1	4.3	245	U	R	149198	JXC0F4-2972-2	JG1004-2972

HONDA
1996-00 CIVIC DX/LX, DEL SOL SI
D16Y7



Includes 748-2250-12-51S Pins and 748-042-CS Spiro Locks

75.00	STD	3.543	5.394	1.181	34.6	9.0:1	2.2	232	T	JC4251	149208	JXC0F4-2953-2	JG1004-2953
75.25	+0.10	3.543	5.394	1.181	34.6	9.0:1	2.2	236	T	JC4251	149209	JXC0F4-2963-0	JG1004-2963
75.50	+0.20	3.543	5.394	1.181	34.6	9.0:1	2.2	239	T	JC4251	149210	JXC0F4-2972-2	JG1004-2972
75.00	STD	3.543	5.394	1.181	34.6	10.5:1	5.7	232	V,L	JC4251	149205	JXC0F4-2953-2	JG1004-2953
75.25	+0.10	3.543	5.394	1.181	34.6	10.5:1	5.7	233	V,L	JC4251	149206	JXC0F4-2963-0	JG1004-2963
75.50	+0.20	3.543	5.394	1.181	34.6	10.5:1	5.7	237	V,L	JC4251	149207	JXC0F4-2972-2	JG1004-2972

HONDA
1996-98 CIVIC EX, DEL SOL SI
D16Y8



Includes 748-2250-12-51S Pins and 748-042-CS Spiro Locks

75.00	STD	3.543	5.394	1.154	32.8	9.0:1	-11.9	229	T	R	149178	JXC0F4-2953-2	JG1004-2953
75.25	+0.10	3.543	5.394	1.154	32.8	9.0:1	-11.9	231	T	R	149179	JXC0F4-2963-0	JG1004-2963
75.50	+0.20	3.543	5.394	1.154	32.8	9.0:1	-11.9	234	T	R	149180	JXC0F4-2972-2	JG1004-2972
75.00	STD	3.543	5.394	1.154	32.8	10.5:1	-4.1	228	V	R	149181	JXC0F4-2953-2	JG1004-2953
75.25	+0.10	3.543	5.394	1.154	32.8	10.5:1	-4.1	231	V,L	R	149182	JXC0F4-2963-0	JG1004-2963
75.50	+0.20	3.543	5.394	1.154	32.8	10.5:1	-4.1	233	V	R	149183	JXC0F4-2972-2	JG1004-2972